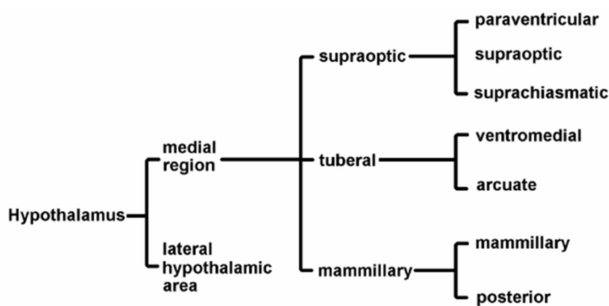
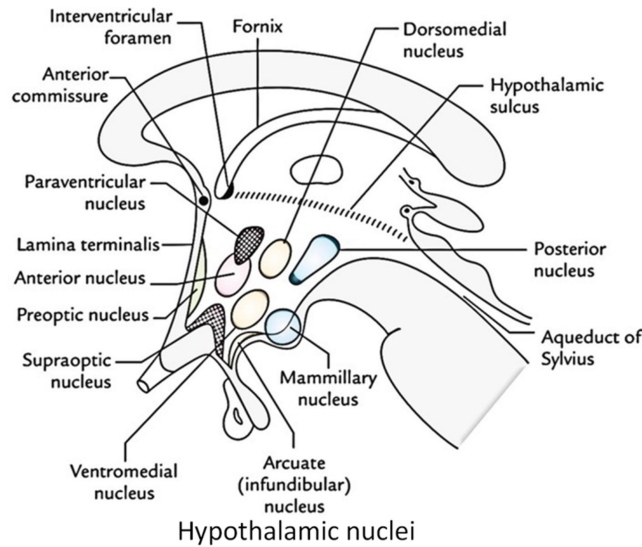


HYPOTHALAMUS (NEUROENDOCRINE GLAND)-PRINCIPAL NUCLEI INVOLVED IN NEUROENDOCRINE CONTROL OF ANTERIOR PITUITARY

Q.What are the major nuclei involved in hypothalamus mediated pituitary regulation.

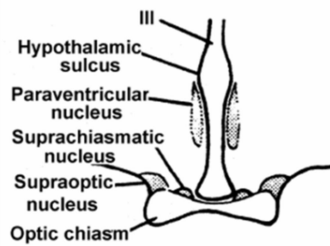
Preoptic, paraventricular, supraoptic, anterior, dorsomedial, ventromedial, lateral, accuate, mammary, posterior nuclei.



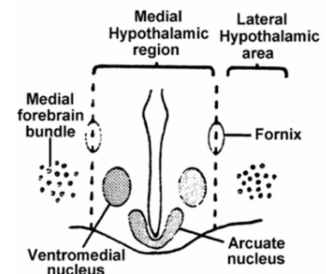
Major hypothalamic nuclear group and nuclei

Q.Give short note on regulatory nuclei of hypothalamus./ Q. State major functions of different hypothalamic nuclei./ Q.Make a brief note on neuroendocrine control of anterior pituitary./ Q.What are the major nuclei found in tuberal region/ preoptic region/ supraoptic region/ mammillary region?/ Q.What do you mean by hypothalamohypophyseal tract/ Q.What is the functional significance of hypothalamohypophyseal tract?

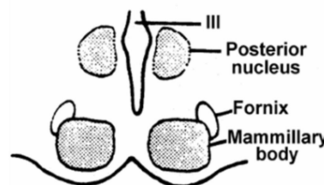
The hypothalamus is composed mainly of different nuclei (discrete masses of grey matter in the central nervous system) that synthesize different hormones in response to physiological changes. These nuclei have been grouped into **four regions**.



Cross section through supraoptic region



Cross section through tuberal region



Cross section through mammillary region